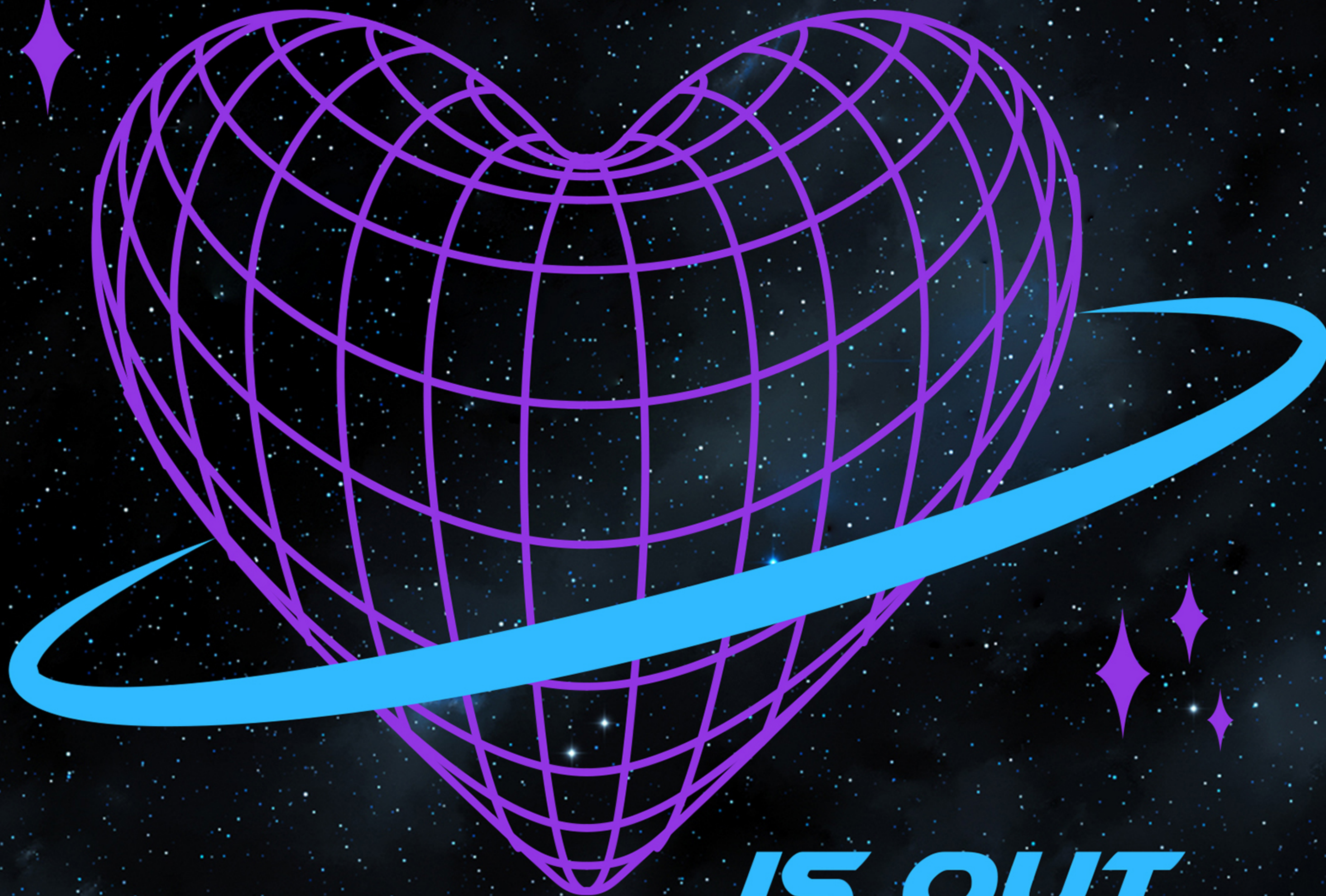




UNIVERSITY OF NORTH TEXAS



PANHellenic



***IS OUT
OF THIS WORLD***



FORMAL RECRUITMENT 2024



Welcome to the Collegiate Panhellenic Council

DEAR PNMS,

If you're thinking about going through sorority recruitment, get ready for an amazing experience! My biggest piece of advice is to keep an open mind and be yourself.

Recruitment can be overwhelming with so many new faces and events, but remember that each sorority is looking for authentic connections. Don't feel pressured to fit a certain mold—just be genuine, and you'll find the right place for you. Trust your instincts and focus on where you feel most comfortable and welcomed.

Also, make sure to take care of yourself during recruitment week. It can be tiring with all the events, so stay hydrated, get enough rest, and eat well. Don't be afraid to ask questions and engage with the members you meet—they're there to help you understand what their sisterhood is all about.

Lastly, enjoy the process! This is a unique opportunity to meet amazing people and potentially find lifelong friends and a supportive community. Good luck and have fun!

SHELLY MCKNEELY 2024 PANHELLENIC PRESIDENT



HI!

Congratulations on taking one of the first big steps of many in finding your community for not only your college years, but the rest of your life. Graduating highschool and coming to college brings on so many new experiences that can be very exciting while also overwhelming. As we embark on our journeys as young women it is invigorating to surround ourselves with like minded women in a place where we can empower each other as well those outside of our own community.

Joining Greek Life allows an individual to become a part of something much greater than themselves. By participating in recruitment you are giving yourself a once in a lifetime experience of meeting so many wonderful women who will allow you to not only learn about who they are and their values but celebrate your own and maybe learn something about yourself you never knew.

I never would have imagined that I would be who I am today when I signed up for recruitment, but I have grown to become someone I can admire due to the love and support shown to me through not only my own sisters, but Panhellenic women across all chapters. So, while you may enter this weekend with some nerves; similar to riding a rollercoaster for the first time, unsure of the ups and downs you may face, at the end you will have found yourself surrounded by so many women who are so excited to get to know you and watch you grow into the woman you are destined to be!

Take a deep breath, relax, and find peace in knowing you are giving yourself the gift of a strong and reliable foundation surrounded by wonderful women for the rest of your life.



ELLA JACOBSEN, 2024 VICE PRESIDENT OF RECRUITMENT AND RETENTION

Fraternity and Sorority Life at UNT

Since 1952, the University of North Texas Fraternity and Sorority community has been a viable and integral part of campus life. With four councils consisting of 40+ fraternities and sororities, our FSL community offers a unique and lifelong involvement experience. Membership in a FSL organization can be one of the most significant experiences for a college student.

The value of Fraternity and Sorority Life for students who choose to participate is the melding of almost every segment of the campus community into one cohesive program. Fraternity and Sorority Life promotes the experience of self-governance, leadership development, academic achievement, community service, social opportunities and friendship. The four councils at the University of North Texas strive to promote the four pillars of the FSL community:

Leadership

Sororities are self-governing organizations, giving members numerous leadership possibilities. Each chapter also utilizes a committee structure that allows you to be involved in all operational aspects of the sorority. Chapters provide educational programming in such areas as time management, leadership, and communication. Leadership is not only easily attainable through Fraternity and Sorority Life, but on campus as well.

Service and Philanthropy

Sorority women's interests and concerns go beyond the confines of campus life. Sororities sponsor a multitude of activities each year to impact the local community and earn money for special philanthropies or identified projects. Each chapter also donates its time and efforts to a particular project, either locally or nationally.

Sisterhood

Joining a sorority is the beginning of new experiences. You'll make new friends and find a home away from home. Sisterhood represents bonds of friendship and unity that last a lifetime. These bonds are not only shared by individual chapter members, but also between chapters around the nation. Not only will you learn to live with others, but through sharing the same experiences, environment, and interests you will develop a very special closeness to those around you. Sisterhood is more than wearing Greek letters and attending chapter meetings and events. It is a feeling and sense of belonging. Sisterhood is the making of friendships and memories that will last a lifetime.

Scholarship

Academic achievement is a significant component of your future success. One primary purpose of the Fraternity and Sorority community is to encourage and develop high scholastic performance among its members. Fraternity and Sorority life helps you meet the challenge of balancing academics, while gaining the most from your collegiate experience. Additionally, each of the chapters on campus facilitates a scholarship program to assist both new and active members in achieving academic excellence.

Collegiate Panhellenic Council

When you join one of the eight National Panhellenic Conference sororities at UNT, you also become a member of the Panhellenic Council. The UNT Panhellenic Council is the umbrella organization for the eight NPC sororities chartered at UNT, and is responsible for organizing activities of mutual concern and interest to all the sororities on campus.

The National Panhellenic Conference, founded in 1902, is the encompassing organization for 26 inter/national women's fraternities and sororities. Each member group is autonomous as a social, Greek-letter society of college women and alumnae. Members are represented on more than 600 college and university campuses in the United States and Canada and in more than 4,600 alumnae associations, making up more than 4 million sorority women in the world.

The UNT Panhellenic Council is composed of eight national sororities. These sororities have enjoyed a rich history at UNT since 1953. With the university's continued support, the Panhellenic Council continues to grow and flourish through the efforts of its members.

Panhellenic Creed

We, as undergraduate members of women's fraternities, stand for good scholarship, for guarding of good health, for maintenance of fine standards, and for serving, to the best of our ability, our college community. Cooperation for furthering fraternity life, in harmony with its best possibilities, is the ideal that shall guide our fraternity activities. We, as fraternity women, stand for service through the development of character inspired by the close contact and deep friendship of individual fraternity and Panhellenic life. The opportunity for wide and wise human service, through mutual respect and helpfulness, is the tenet by which we strive to live.



Panhellenic Executive Board

University of North Texas Panhellenic Association Executive Board is comprised of eight women from different chapters in UNT's Panhellenic community. Each woman is elected for a specific position that benefits the Panhellenic community as a whole. The executive board holds bi-weekly council meetings with representatives from each chapter in order to collaborate on matters such as upcoming events, recognizing chapter accomplishments and integrating with the larger Greek community and UNT as a whole.



SHELLY MCKNEELY
PRESIDENT



EMMA FERGUSON
1ST VICE PRESIDENT



ELLA JACOBSEN
VP OF RECRUITMENT AND RETENTION



KIANA THOMAS
VP OF PROGRAMMING



ANUSKA ACHARYA
VP OF FINANCE



MAGGIE STANFIELD
VP OF SCHOLARSHIP



EMILY QUINN
VP OF SERVICE



JESSICA HOECHSTETTER
VP OF COMMUNITY RELATIONS

Panhellenic Recruitment Team

Each year, some of the most authentic and influential leaders of UNT's Panhellenic community are selected to serve as Rho Gammas and Logistics Team Members. They promise to act as confidants and mentors to the Potential New Members and uphold the standards of the recruitment process while remaining enthusiastic and living the core Panhellenic values of service, scholarship, leadership, and sisterhood. Disaffiliated from their chapters, the Recruitment Team serves as unbiased mentors, friends, and guides throughout the week and help with the planning and coordinating of the recruitment process. They are trained for their role as your listener, role model, cheerleader, confidant, coach, and most of all a friend. They have no contact with their sorority during the week of recruitment, and you will not learn their affiliation until Bid Day. Each of you will be a part of a group led by a Recruitment Counselor who will be your guide throughout the recruitment process.



ABIGAIL VANNEWHOUSE



ANNA AKOS



ANNIKA BISHOP



AVA MCDONALD



AVERY FOLTZ



AVI BRITTON



ELSA SANCHEZ



ERIKA BARONE



ISABELLA RODRIGUEZ



JASMINE KELLEY



JERAH NELSON



KIRSTEN NIELSEN



LAYLA POCHE



LESLIE CANALES



LILY CHOI



LONDON CUMMINGS



MCKENNA MACKEY



SHAYE STEPHENS



VANESSA ORTIZ



ZOE COTTON



Greek Terminology

Active Member: An undergraduate sorority/fraternity member who has been initiated by their chapter and is in good standing with UNT and their organization.

Alumna/Alumni: A sorority/fraternity member who is no longer a member of a collegiate chapter, but remains a member of the organization (plural is alumnae).

Badge: Pin worn by an initiated member. Many organizations will have a new member badge for their members who are not initiated yet.

Bid: A formal written invitation to join a sorority or fraternity. Women are only able to receive one bid while going through recruitment.

Chapter: A membership unit of a national or international sorority or fraternity.

Continuous Open Bidding (COB): COB bids may be extended and accepted at any time during the school year other than Formal Recruitment COB is also referred to as Continuous Open Bidding and Informal Membership Recruitment.

Initiation: The formal ceremony in which new members receive life-long membership privileges and becomes an active member of the organization.

Legacy: A woman whose mother, sister, or grandmother, is an alumna or active member of a National Panhellenic Conference sorority. Legacy status differs by organization.

Membership Recruitment Acceptance Binding Agreement (MRABA): A document each potential new member completes immediately following the Preference Round of events stating her membership preferences. The potential new member ranks the sororities she would accept a bid from in preferential order. This is a binding agreement stating that the PNM is willing to accept a bid from any sorority she lists. This agreement is binding until the next fall recruitment.

National Panhellenic Conference (NPC): The governing body composed of 26 inter/national women's fraternities and sororities.

New Member: A woman who has accepted a sorority bid but is not yet an initiated member.

Panhellenic Association: The College Panhellenic Association is a cooperative campus organization of collegiate members of NPC Sororities. They are also referred to as Panhellenic Council, CPC, and PAN.

Philanthropy: A service project undertaken by Greek organizations at the campus, community, or national level. Most national organizations have a designated cause to which they serve.

Potential New Member (PNM): Any woman interested in becoming a sorority member who is eligible to join according to the Panhellenic Association's requirements.

Recruitment Counselor (Rho Gamma): Greek women carefully selected and trained to guide potential new members through the formal recruitment process. They disassociate from their respective chapters throughout the recruitment process to assist the PNMs. Also referred to as Recruitment Counselors or Rho Gammas.

Single Intentional Preference: Occurs when a PNM attends more than one preference event but does not list all of her options on her MRABA. This is highly not recommended and could negatively affect your selection process.

GREEK ALPHABET



A alpha

B beta

Γ gamma

Δ delta

E epsilon

Z zeta

H eta

Θ theta

I iota

K kappa

Λ lambda

M mu

N nu

Ξ xi

O omicron

Π pi

P rho

Σ sigma

T tau

Υ upsilon

Φ phi

X chi

Ψ psi

Ω omega



General Financial Terms



Chapter Dues: The dues fund all member activities including programming, recruitment, chapter supplies, and chapter operations

Composite: An annual photograph is taken of each chapter's membership. This expense can be included in the dues or billed separately

House Corporation Fee: These funds are used to support chapter property and physical plant. Often this is a one-time fee paid prior to initiation

Initiation Fee: Fee paid to finalize initial membership in organization

Liability/Risk Insurance: This fee covers insurance-related costs for the safety of members, their guests, and sorority property. Funds may also be used for special programming relating to risk management concerns on campus or within the chapter

New Member Fee: Fee paid to establish membership in the organization

Panhellenic Dues: These funds are used for Panhellenic operations. Attending conferences, recruitment, office operations, marketing, and electronic media are some of the items included in the Panhellenic budget

Parlor/House Usage Fee: The entire membership has access to the house/lodge and thus the property is subject to a great deal of wear and tear. This fee is used primarily for care and maintenance of property and furnishings in the common areas of the chapter facility

Per Capita Fee: Fee paid to inter/national organizations per member to support overall sorority operations

Purchasing Fund: This fund is set up at the beginning of each semester to pay for things not included in chapter dues. Fund could be used to purchase t-shirts, sorority paraphernalia or attend optional social functions

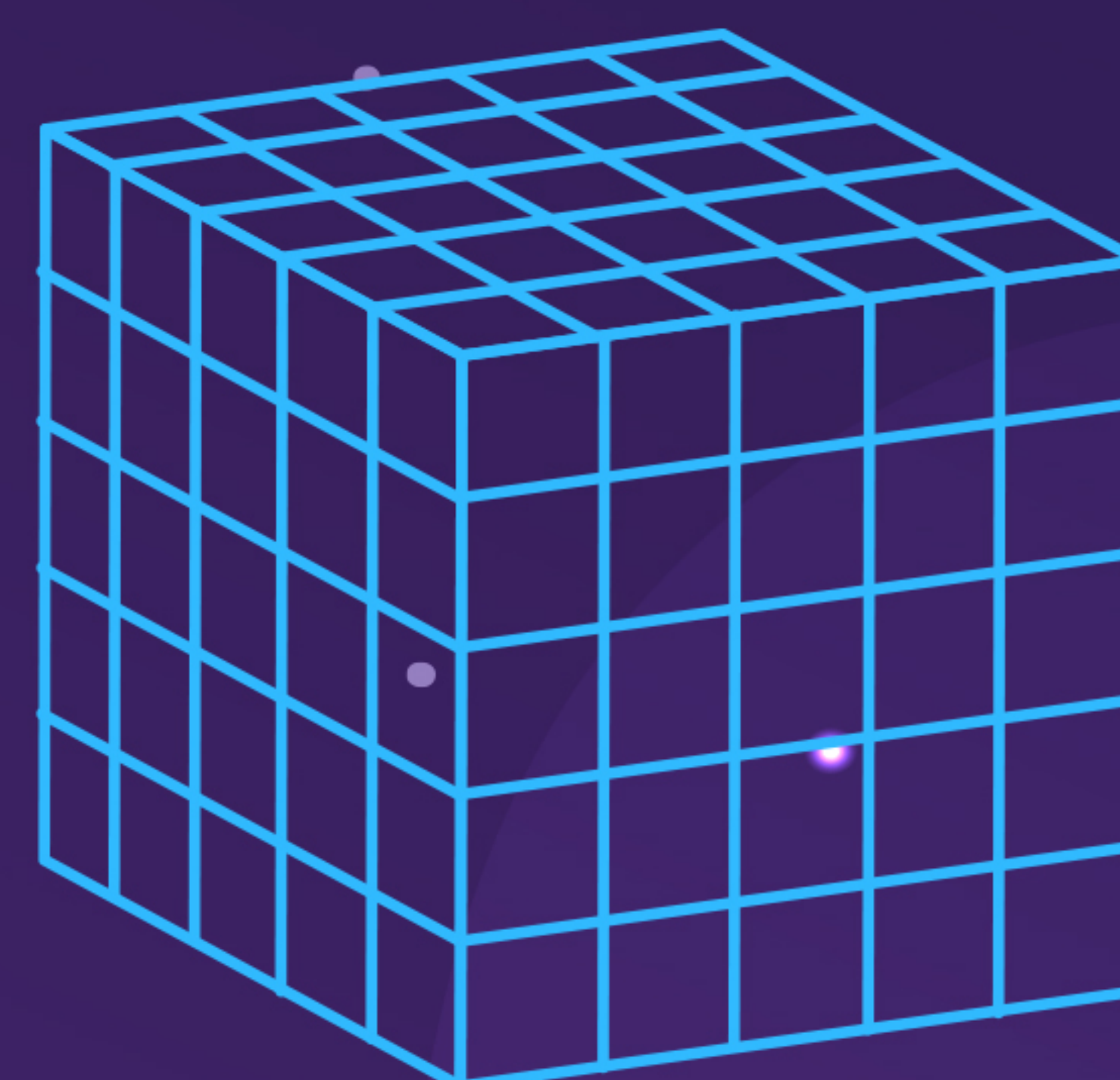
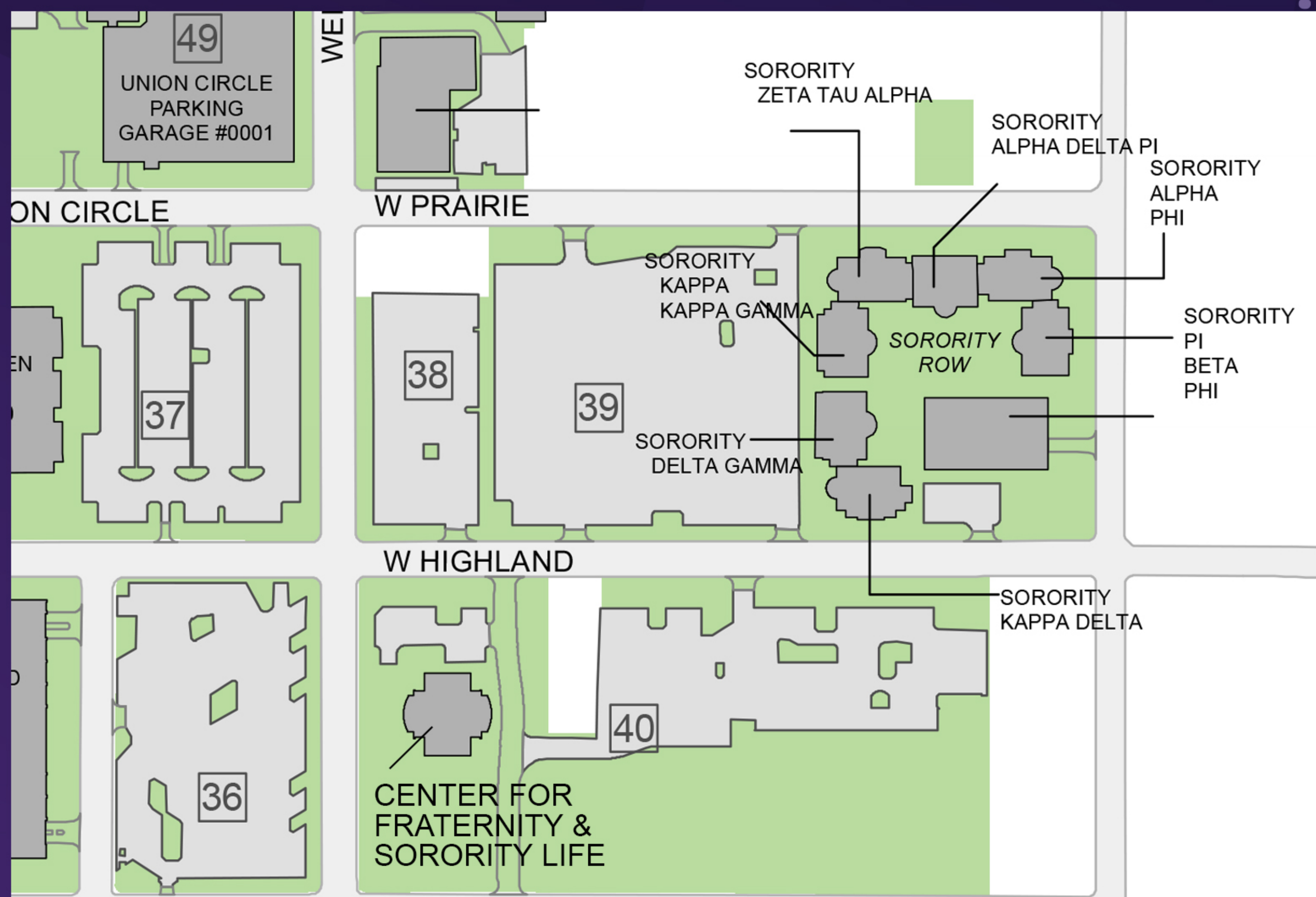


Sorority Finances

Belonging to a sorority does carry a certain financial obligation. The new member semester is generally the most costly, as several one-time fees are incurred, such as recruitment, new membership, initiation, and your membership badge. Semester dues may include national and chapter dues, social activity fees, insurance, housing fees, and Panhellenic dues. Most chapters require dues to be paid at the beginning of the semester. However, the chapters offer payment plans for women who are unable to pay the entire sum at once. Estimates may be different for women living in the chapter house. Rent is determined by each individual chapter.

Chapter Housing

Sorority members have the opportunity to live in chapter houses within walking distance of campus. Seven of the eight sororities have live-in chapter houses, one sorority maintains a non-residential lodge. Chapter housing is for upperclassmen, as freshmen are required to live in university residence halls. Upper class members may have an obligation to live in the sorority house at some point during their collegiate career; however, each sorority establishes its own regulations regarding members living in or out of the chapter house.



Recruitment Rules for Potential New Members

- The Panhellenic recruitment team and the CFSL office serves as the main point of information for the potential new members. Chapter members are able to communicate with PNMs and share their sorority experience. Sororities will not be hosting events outside of the recruitment schedule. They will also not have private conversations with PNMs about joining their sorority as they promote the entire sorority experience.
- A potential new member shall consult her Rho Gamma (recruitment counselor) before withdrawing from recruitment.
- All potential new members must attend ALL parties. If you are unable to do so, please contact your Rho Gamma immediately to make alternative arrangements.
- Sororities may not promise a bid or membership to a potential new member during or before the recruitment process. This includes verbally or in writing.
- A potential new member shall not give a promise, verbal or written, to join a certain chapter before Formal Bids have been issued through Panhellenic.
- From the beginning of Recruitment Orientation through the end of Formal Recruitment, no potential new member may visit a sorority chapter facility or individual members outside of scheduled recruitment events as outlined in the schedule provided.
- If through the primary recruitment process a potential member receives a bid and then has her pledge broken or breaks her pledge, then she is ineligible to be pledged to another NPC organization at UNT until the next fall.
- If any active chapter member, Recruitment Team member, or fellow PNM is acting in a way that does not align with the rules of the formal recruitment process or the standards of our Panhellenic community, please report the incident to a Rho Gamma, staff member, or a member of the Recruitment Team. We are here to help you!



Schedule and Attire

Orientation- August 30th

At this time you will receive the detailed schedule for the week for Round One. Orientation will provide an opportunity to learn even more about the recruitment process. You will also meet your Rho Gamma who will be your guide throughout the recruitment process. You will not visit chapters on this day, so come casual.

Round One - Open House - August 31st

What to expect: Round One is your opportunity to attend an open house for each of the eight sororities. The parties will last 30 minutes each. This is a "get to know you" round. Members will be asking you about yourself so have some talking points ready. This is also a great time to ask general questions about sorority life at UNT.

What To Wear

T-shirt provided at orientation and comfortable bottoms (shorts, casual skirts, capris, etc). The day is casual and comfortable shoes are recommended, as this is the longest day of recruitment and there will be lots of walking. Please bring small bags that you can wear, like cross body, fanny pack, small wrist let, small backpack etc. Bags larger than a cross body bag will not be allowed in the houses during any day of recruitment.



Schedule and Attire

Philanthropy- September 1st

Round Two – Philanthropy

What to expect: Round Two is a day for the sororities to showcase their philanthropies. They will share what type of events and community service they do. You will attend a maximum of four parties, each lasting 45 minutes.

What To Wear

Today's attire is slightly dressier than round one, but you still want to dress comfortably. A pair of nice pants, skirt, romper, dress pants, capris or sundress is appropriate. Make sure you still wear shoes you can walk in and stand for long periods of time. Don't wear new shoes if they aren't broken in yet!



Schedule and Attire

Preference- September 2nd

At this time you will receive the detailed schedule for the week for Round One. Orientation will provide an opportunity to learn even more about the recruitment process. You will also meet your Rho Gamma who will be your guide throughout the recruitment process. You will not visit chapters on this day, so come casual.

Round Three- Preference

What to expect: Preference is the most formal of all the events. The parties will focus on the core aspects of sorority life, including friendship, sisterhood, and tradition. You will attend a maximum of two preference events lasting 60 minutes each. This day serves as an opportunity to seriously consider which chapter you wish to join.

What To Wear

Today's attire is the most formal of the week. A cocktail or semi-formal dress or pant suit is appropriate. If you want to wear heels today day is the day to do so but remember you still will be walking to the houses.





CHAPTERS

ALPHA DELTA PI



Nickname: ADPi

Nationally Founded: Wesleyan Female College, 1851

Local Founding: University of North Texas, 1953

Mascot: Alphie (Lion)

Flower: Woodland Violet

Symbol: Diamond

Colors: Azure Blue and White

Motto: We Live for Each Other

Philanthropy: Ronald McDonald House Charities

Website: www.alphadeltapi.org





ALPHA PHI



Nickname: A Phi

Nationally Founded: Syracuse University, 1872

Local Founding: University of North Texas, 1954

Mascot: Phi Bear

Flower: Forget-Me-Not & Lily of the Valley

Symbol: Ivy Leaf

Colors: Silver and Bordeaux

Motto: Union Hand in Hand

Philanthropy: The Alpha Phi Foundation

Website: www.alphaphi.org



CHI OMEGA



Nickname: Chi O

Nationally Founded: University of Arkansas, 1895

Local Founding: University of North Texas, 1953

Mascot : Owl

Flower: White Carnation

Symbol: Skull and Crossbones

Colors: Cardinal and Straw

Motto: Sisters on Purpose

Philanthropy: Make a Wish

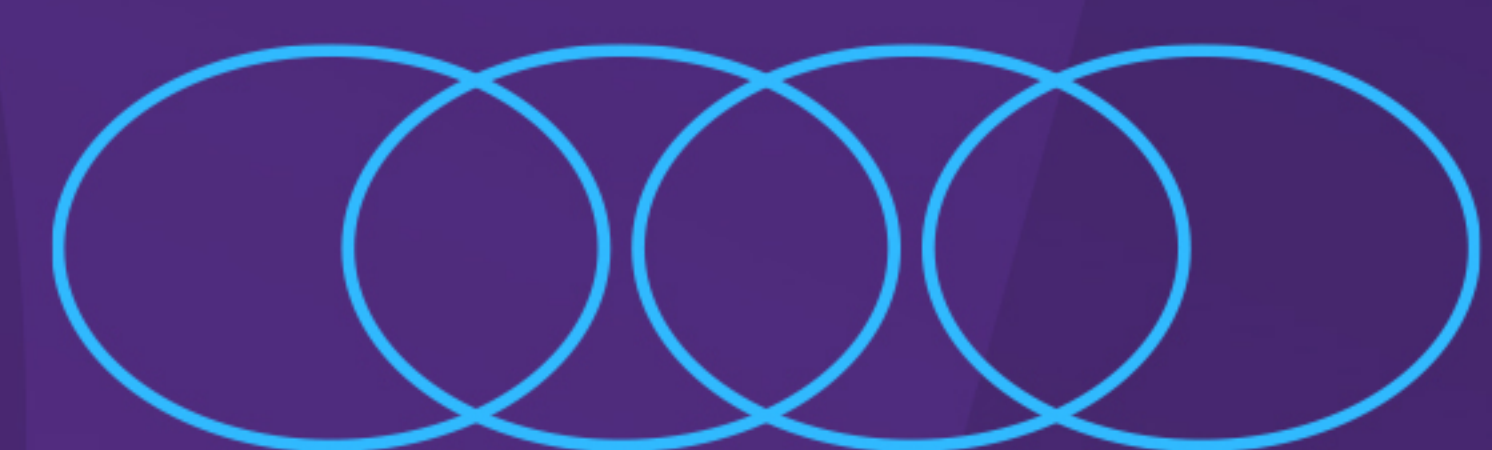
Website: www.chiomega.org



DELTA GAMMA



Nickname: DG
Nationally Founded: Lewis School, 1873
Local Founding: University of North Texas, 1953
Mascot: Hannah Doll
Flower: Cream Colored Rose
Symbol: Anchor
Colors: Bronze, Pink, and Blue
Motto: Do Good
Philanthropy: Service for Sight
Website: www.deltagamma.org



KAPPA DELTA



Nickname: KD

Nationally Founded: Longwood College, 1897

Local Founding: University of North Texas, 1954

Mascot: Teddy Bear

Flower: White Rose

Symbol: Nautilus Shell and Dagger

Colors: Olive Green and Pearl White

Motto: Let Us Strive for that which is Honorable,
Beautiful, and Highest

Philanthropy: Girl Scouts of America and Prevent
Child Abuse America

Website www.kappadelta.org

KAPPA KAPPA GAMMA



Nickname: Kappa

Nationally Founded: Monmouth College, 1870

Local Founding: University of North Texas, 1989

Flower: Iris

Symbol: Owl, Key, Fleur-de-lis

Colors: Dark Blue and Light Blue

Motto: Dream Boldly, Live Fully

Philanthropy: Mental Health & Kappa Kappa
Gamma Foundation

Website www.kappkappagamma.org



PI BETA PHI



Nickname: Pi Phi

Nationally Founded: Monmouth College, 1867

Local Founding: University of North Texas, 1976

Mascot : Angel

Flower: Wine Carnation

Symbol: Arrow

Colors: Wine and Silver Blue

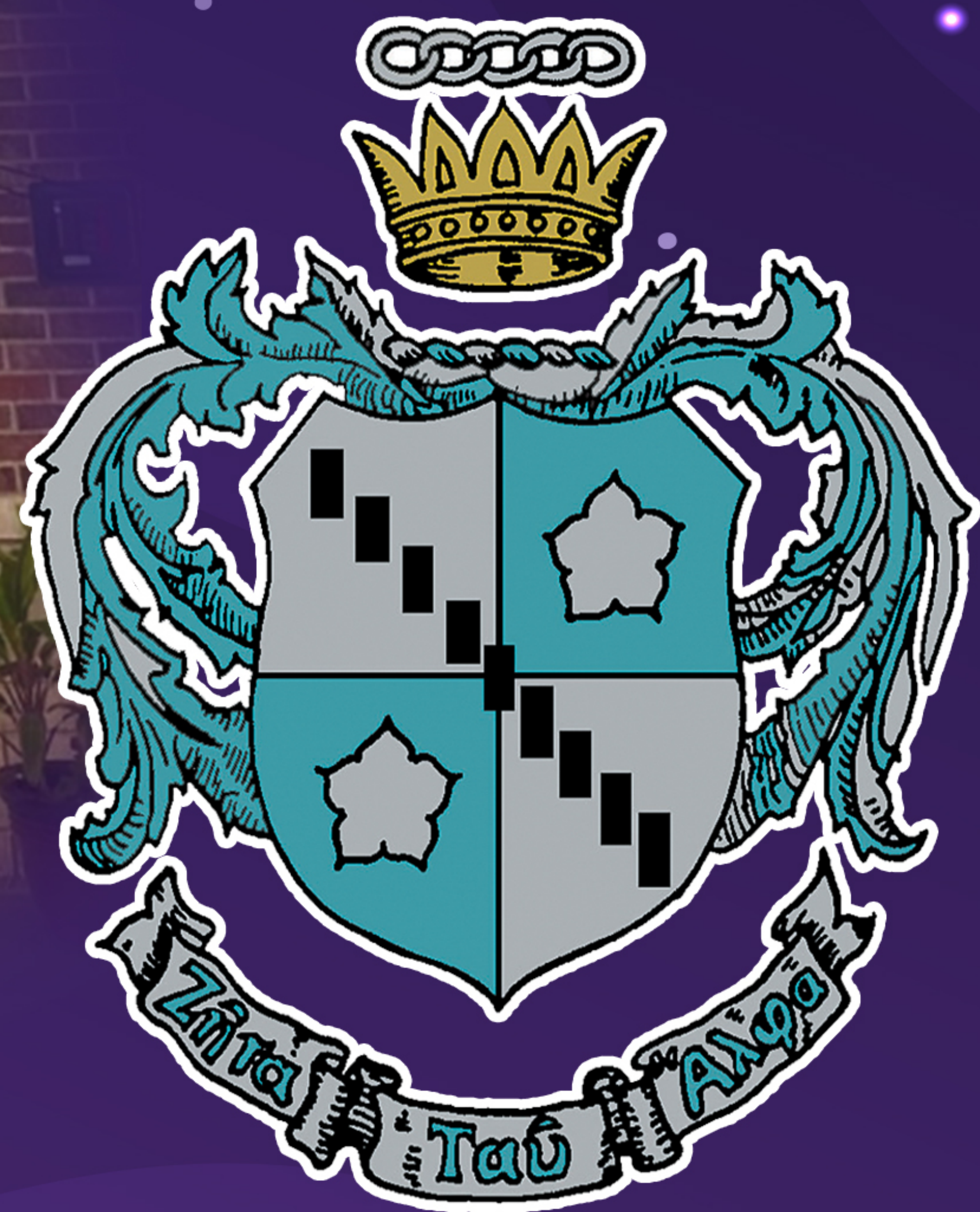
Motto: Friends and Leaders for Life

Philanthropy: Read > Lead > Achieve

Website: www.pibetaphi.org



ZETA TAU ALPHA



Nickname: Zeta

Nationally Founded: Longwood College, 1898

Local Founding: University of North Texas, 1953

Mascot: Bunny (local)

Flower: White Violet

Symbol: Five Point Crown

Colors: Turquoise Blue and Steel Grey

Motto: Seek the Noblest

Philanthropy: Breast Cancer Education and Awareness

Website: www.zetataualpha.org



Potential New Members Bill of Rights

- The right to be treated as an individual.
- The right to be fully informed about the recruitment process.
- The right to ask questions and receive true and objective answers from recruitment counselors and members.
- The right to be treated as a capable and mature person without being patronized.
- The right to ask how and why and receive straight answers.
- The right to have and express opinions to the recruitment counselors.
- The right to have inviolable confidentiality when sharing information with recruitment counselors.
- The right to make informed choices without undue pressure from others.
- The right to be fully informed about the binding agreements implicit in the preference card signing.
- The right to make one's own choice and decision and accept full responsibility for the results of that decision.
- The right to have a positive, safe, and enriching recruitment and new member period.
- The right to not be persuaded by a sorority member to resign her bid to any sorority.

Recruitment Dos and Don'ts

- Do ask questions
- Do get plenty of sleep and eat healthy meals
- Do keep an open mind
- Do dress for the Texas weather
- Do bring a small purse
- Do wear practical clothing and shoes for being on your feet all day
- Do think of things you would want the sororities to know about you
- Do keep negative opinions to yourself – not everyone has the same recruitment experience as you

- Don't believe everything you see on television or movies about Greek life
- Don't reach out to members of sororities during formal recruitment
- Don't talk about boys or partying
- Don't dismiss a chapter based on a stereotype
- Don't be disrespectful to any chapter member, Recruitment Team Member, or a fellow PNM – this can result in dismissal from the recruitment process
- Don't ignore what your recruitment team tell you – they have your best interest in mind

Potential Questions for each Chapter

- What made you decide to join Fraternity and Sorority Life?
- What made you choose your chapter?
- What is your favorite memory in your chapter?
- What made you stay in your chapter?
- How has your chapter encouraged you to grow?
- What are the leadership opportunities in your chapter?
- What kind of support does the chapter provide academically?
- Do members spend time together outside of meetings and mandatory events?
- What makes your chapter's sisterhood strong?
- What are the time commitments as a member of your chapter?
- What is the thing you find most unique about your sorority?
- How were you sure this was the right choice for you?





Frequently Asked Questions

What if I am a Legacy?

- It is important to know that being a Legacy does not guarantee an invitation to membership in a sorority, nor does it obligate women to join. It is up to the discretion of each individual chapter to decide whether they are interested in extending membership to a legacy. Likewise, no potential new member has to choose the sorority in which she is a legacy to. Each potential new member going through Formal Recruitment should consider their compatibility with each sorority. It is important to note that sororities often change over time and vary between campuses. Please keep an open mind and consider all sororities!

How many women actually get invited to join sororities at the end of Recruitment?

- Most women participating in recruitment are invited to join a chapter, as long as you maximize your options. Every year we see less than 3% of women released from the recruitment process.

Can I be excused from recruitment events because of prior commitments or classes?

- Only academic classes, official university events, illness, or an emergency are considered excused absence. "University events" would include university athletic team practices, marching band, cheerleading, or any of the university's mandatory programming. All recruitment events that you are scheduled for are mandatory. Failure to attend an event without prior approval of excused absence can result in being released from the entire recruitment process.

Is there a grade requirement for participating in recruitment and to join a sorority?

- The UNT Center for Fraternity and Sorority Life requires a minimum 2.75 high school GPA for entering freshmen and a 2.5 college GPA for current UNT students or transfer students. Please note that meeting this minimum does not guarantee membership in a sorority as many sororities do have higher recruitments.

2024 PANHELLENIC RECRUITMENT

***AUGUST 30TH
TO SEPTEMBER 2ND
BID DAY: SEPTEMBER 3RD.***

REGISTER ONLINE AT: CFSL.UNT.EDU

REGISTRATION FEE: \$50.00

***IT IS REQUIRED THAT YOU EMAIL 1 COPY OF YOUR HIGH SCHOOL
OR COLLEGE TRANSCRIPTS TO: panhellenic@unt.edu**

STAY CONNECTED

TIKTOK: [UNTPANHELLENIC](#)

INSTAGRAM: [UNTPAN](#)

