



# EAGLE CAMP

Soar to New Heights: Eagle Camp's Tropical Adventure!



**UNT**

DIVISION OF  
STUDENT AFFAIRS  
Orientation & Transition  
Programs

Name: \_\_\_\_\_

Group #: \_\_\_\_\_

# EAGLE CAMP LEADERSHIP

**Shaun Holloway (he/him)**, *Coordinator*

**Jaz (she/her)**, *Student Coordinator*

**Lauren Griffin (she/her)**, *Graduate Assistant*

**Jeremy (he/him)**, *Student Coordinator*

## ALL CAMP LEADERS

**Alfred (he/him)**

**Jennifer (she/her)**

**Ray (she/her)**

**Bre (she/her)**

**Mark (he/him)**

**Viviana (she/her)**

### Starfish

#### GROUP 1

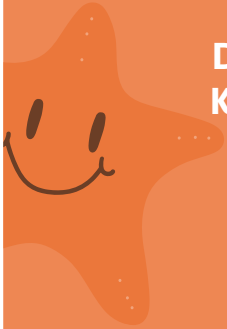
Emma (she/her)  
Kris (they/them)

#### GROUP 2

Dorothy (she/her)  
Krystian (she/her)

#### GROUP 3

Harshil (he/him)  
Trey (he/him)



### Flamingos

#### GROUP 4

Jelani (he/him)  
Alyssa (she/her)

#### GROUP 5

Kyi (she/her)  
Matthew (he/him)

#### GROUP 6

Jordan (she/her)  
Shanice (she/her)



### Toucans

#### GROUP 7

Chris (he/him)  
Troy (he/him)

#### GROUP 8

August (he/him)  
Madison (she/her)

#### GROUP 9

Collin (he/him)  
Sandra (she/her)



# DAY 1: FRIDAY, AUGUST 9

- 8:00 AM **Check-in**  
*Union 341*  
Once you are checked-in for Eagle Camp, you will load the bus to head to the camp site.
- 9:30 AM **Travel to Glen Lake**  
Camp participants will ride on a bus over to Camp Glen Lake to begin Eagle Camp.
- 11:00 AM **Move into Cabins**  
*Cabins*  
Camp participants will have a chance to move into their cabins during this time block. Please refer to your name tag for your cabin assignment. You will have time to move-in, get settled, create your camp mailbox, and get ready for the welcome.
- 12:00 PM **Lunch**  
*Dining Hall*
- 1:00 PM **Welcome**  
*Ogle Chapel*  
Join your classmates for the official welcome to Eagle Camp. You will have the opportunity to meet the Eagle Camp team, participate in UNT spirit and traditions, and go over policies, procedures, and rules.
- 1:30 PM **Small Group 1** (Intro, Expectations, Icebreaker Activity)  
*Groups 1-3: Ellis Education Building | Groups 4-6: Turner Hall | Groups 7-9: Siceloff*  
During this session, you will meet your Eagle Camp leader and other new students. You will go over the schedule and Eagle Camp expectations.
- 3:00 PM **Camp Activities** (Zip-Line, Volleyball, etc.)  
*Water park | Zip-Line (Behind dining hall) | Volleyball (Next to Activity Gymnasium) | Dodgeball (Activity Gymnasium) | Board Games (Siceloff) | Karaoke (Turner)*  
During this session, you can choose from various camp activities to participate in.
- 5:00 PM **Dinner**  
*Dining Hall*
- 6:00 PM **Small Group 2** (Fears & Fear Busters)  
*Groups 1-3: Ellis Education Building | Groups 4-6: Turner Hall | Groups 7-9: Siceloff*  
Meet with your Eagle Camp leader and small group to discuss some of the fears you may have about starting college and resources/tips to overcome them. Your Eagle Camp leader will also prepare you for the All-Camp Challenge.
- 7:00 PM **All Camp Challenge 1-2**  
*Miller Activity Center*  
Get ready for the All-Camp Challenge! You will compete against the other families to determine who wins the All-Camp Award!

8:30 PM **Mini Challenges**

*Various Locations*

We will have mini challenges that can help you earn more points for your families during this time!

9:30 PM **Night Activities**

Cabin time is designed for camp participants to start winding down for the evening. There will be games in the common cabin spaces for those who may be tired, but at 12:00 AM, you must be in your assigned cabins.

## Night Activities

**Smores + Games + Karaoke + Pizza**

*9:30 PM - 11:30 PM*

Siceloff Auditorium

**Dodgeball**

*9:30 PM - 11:00 PM*

Miller Activity Gymnasium

12:00 AM **Lights Out**

# DAY 2: SATURDAY, AUGUST 10

- 8:00 AM **Breakfast**  
*Dining Hall*
- 8:45 AM **Pack Up + Move Everything to Ellis**  
Begin to clean up and pack up your cabins for departure. Move your items to Ellis.
- 9:00 AM **Small Group 3** (All-Camp Chant Practice)  
*Groups 1-3: Ellis Education Building | Groups 4-6: Turner Hall | Groups 7-9: Siceloff*  
Meet with your Eagle Camp leader and small group to practice your chant. Your Eagle Camp leader will also prepare you for the All-Camp Challenge.
- 10:00 AM **All Camp Challenge 3-5**  
*Miller Activity Center*  
Get ready for the All-Camp Challenge! You will compete against the other families to determine who wins the All-Camp Award!
- 12:00 PM **Lunch**  
*Dining Hall*
- 1:00 PM **All Camp Chants**  
All families will return to the auditorium for the final chant competition.
- 2:00 PM **Small Group 4** (Wrap-Up, Connection to Campus, Belonging)  
Meet with your Eagle Camp leader and small group to discuss some of the fears you may have about starting college and resources/tips to overcome them. Your Eagle Camp leader will also prepare you for closing.
- 2:45 PM **Closing Ceremony**  
In the camp closing, we will wrap up, give next steps for preparing for college, and announce the winner for the All-Camp Challenge.
- 3:30 PM **Depart to Campus**  
We will start packing up the buses and head back to campus and officially conclude Eagle Camp.

Special Thanks to our 2024 Sponsor

**BARNES & NOBLE**  
COLLEGE

# TRADITIONS

## **Scrappy, the Eagle Mascot**

The student body chose the Eagle as our mascot in 1922 for its keen eye, strength, independence and loyalty. In 1950, students named the first live bird mascot “Scrappy,” which later became the name of the human mascot. The Eagle was known by other names through the years, including “Eppy” in the 1980s. But in 1995, our modern-day Scrappy returned to the nest as the Mean Green’s biggest fan.

## **Eagle Claw**

The Eagle hand sign is our universal sign of pride and unity. To display your pride:

1. Hold up your fist.
2. Make a “V” for Victory using your pointer and middle fingers.
3. Extend your thumb and curl your fingers slightly toward your palm.

## **Mean Green Nickname**

Our unique Mean Green nickname originated in the 1960s as fans cheered on the football team and its punishing defense. The earliest newspaper references to the Mean Green appeared in the spring of 1967. One of the original Mean Green players went on to a Hall of Fame career in the NFL with a nickname of his own, “Mean” Joe Greene. The dominating lineman became the cornerstone of the Pittsburgh Steelers’ “Steel Curtain” defense and a four-time Super Bowl champion. Today, all of our athletics teams are known as the Mean Green.

## **Homecoming Bonfire**

Bonfires that marked big football games in the 1920s became official Homecoming bonfires by the 1930s. Through the years, a torch-lit parade led students to the bonfire site. The Spirit March now winds from Greek Row and the residence halls to the site near DATCU Stadium where the bonfire is built and guarded by the Talons.

## **Friday Pride Day**

Students, faculty, staff, alumni and other Mean Green fans wear green every Friday to show their university pride throughout the year.

## **Boomer the Cannon**

The Talons began the 1970 football season with a blast as they introduced their newest spirit project, a muzzleloader cannon. Boomer, a scale replica of a model widely used in the U.S.-Mexican War, is fired to signal Mean Green scores, kick-off, half-time and the end of football games as well as special occasions such as University Day. It has been refurbished through the years by alumni who also added a handcrafted oak limber to carry Boomer’s accessories and provide a parade perch for Scrappy.

## **UNT Battle Flag**

The UNT Battle Flag was created by Jim Hobdy in 1986 while an employee of the athletics program and it became a recognized university symbol. Today, the Talons wave a version of the flag at football games. In 2017, a giant 30-foot by 60-foot flag was raised on a 120-foot flag pole on the north side of DATCU Stadium.

### **Mean Green Machine**

The Mean Green Machine is a 1929 Ford Model A Tudor Sedan built in 1931. It was donated by an alumnus in 1974 and became part of a traveling spirit caravan that also included a green military jeep. The Model A was driven around the track after touchdowns and has been renovated and rebuilt through the years. It was given a green makeover in 2012 when engineering technology students outfitted it with an electric motor.

### **Lighting of McConnell Tower**

Green lights, first installed by the Talons in the 1970s, shine on McConnell Tower after athletic victories and for special occasions. After evening home football victories, the Talons lead the march from DATCU Stadium to the Hurley Administration Building where they turn on the tower's green lights to signal the win to the campus and community. LED lights installed in 2014 make our green light shine bright.

### **Pit Crew**

The Pit Crew is the official student section for Mean Green basketball in the UNT Coliseum, known as the "Super Pit." The Mean Green students continue the tradition of earlier generations of fans who rowdily cheered on the team when games were in the old Men's Gym, or "Snake Pit," making UNT an intimidating place to play.

### **Mean Green March**

Before each home football game, the Green Brigade marching band, dancers, cheerleaders, Talons and Scrappy join the Mean Green team on its way to the locker room for final pregame preparations. The march begins two hours before kickoff at the Red Lot entrance.

### **Green Brigade March to the Stadium and Fifth Quarter Performance**

The Mean Green kickoff is near when the acclaimed Green Brigade marching band makes its way through the tailgating areas on home game days. Accompanied by the cheerleaders, dancers and Scrappy, the band begins at Victory Hall and circles the Hill on its way to the pregame performance at DATCU Stadium. Immediately following the game, fans are treated to "Fight, North Texas," "Glory to the Green and White" and a tune from the halftime show before the performance concludes with the favorite "You'll Never Walk Alone."

### **Spiriki**

Spiriki, a bronze eagle statue, was unveiled in 2011 at UNT's DATCU Stadium. As Mean Green players take the field, they touch the statue to pledge their best efforts in the game. The statue by renowned wildlife sculptor Kent Ullberg was commissioned by the Geezles, a campus fraternity from the 1920s to the 1970s that includes many former athletes and coaches. The name "Spiriki" comes from an old fraternity greeting believed to be the combination of the words "spirit" and "kee," the cry of an attacking eagle.

## FIGHT SONG

“*Fight, North Texas*” was written in 1939 by alumnus Francis Stroup (1909-2010) after ‘Fessor Floyd Graham announced a marching song contest at a Saturday Night Stage Show. Stroup, a 1929 graduate who composed songs throughout his life, won the contest. He retired as a professor of physical education from Northern Illinois University, where he also wrote the fight song. As a North Texas student, he lettered in basketball and was an accomplished swimmer and diver. He was inducted into the UNT Athletics Hall of Fame in 1987. Stroup helped re-write the lyrics to our fight song when our name changed to the University of North Texas.

### **Fight, North Texas**

**Let’s give a cheer for U of NT, cheer for the Green and White.  
Victory’s in store, but whate’er the score,  
Our team will ever fight. Fight! Fight! Fight!  
Shoulder to shoulder we march along, striving for victory,  
Playing the game for the honor and fame and glory of UNT.  
U - N - T Eagles. UNT Eagles. Fight! Fight! Fight!**

## ALMA MATER

Our alma mater, “Glory to the Green and White,” was written by two students and adopted in 1922. The words were by Charles Langford (1902-1931), who attended from 1920 to 1923. He was a baseball and football star who became a yell leader after he was sidelined by an injury. The music was composed by Julia Smith (1905-1989), who earned her degree from the college in 1924. She was known for her musical abilities and played saxophone in the band. She later gained national fame as a composer and concert pianist. The words to the alma mater were changed as we became a university.

### **Glory to the Green and White**

**Singing glory to the green,  
Singing glory to the white,  
For we know our university  
Is striving for the right.  
Down the corridor of years  
We’ll forget the joys and tears,  
But North Texas, North Texas, we love!**



# WANT TO BE AN ORIENTATION LEADER?

Applications opening October 2024. Follow @UNT\_OTP on Instagram for updates.

## BENEFITS

- One-of-a-kind summer experience
- Personal & Professional Development
- FREE Summer Housing
- Summer Stipend
- Staff Apparel/Swag
- Summer meal plan
- Rec Center pass
- Parking Permit

## REQUIREMENTS

- No work experience needed
- Attend an Informational Meeting

September 30, 2024	October 16, 2024
October 8, 2024	October 17, 2024
October 10, 2024	October 23, 2024
October 14, 2024	October 25, 2024

- Apply Via Handshake & Qualtrics

Don't Forget to Register for

# Family Weekend

Friday, September 20 - Sunday, September 22, 2024

[familyweekend.unt.edu](http://familyweekend.unt.edu)

# First Year Programs

## Fall Events

### Class Schedule Tours

August 12  
10 AM - 12 PM  
Library Mall

### AIM Informational Session

August 12  
1 PM - 2:30 PM  
Union 381

### Class Schedule Tours

August 14  
10 AM - 12 PM  
North Lawn

### AIM Informational Session

August 14  
3 PM - 4:30 PM  
Union 332

### Out of State Student Reception

August 16  
2 PM - 4 PM  
Union 385

### First Day of School Photos

August 19  
10 AM - 12 PM  
North Lawn

### First Day of School Photos

August 20  
11 AM - 1 PM  
North Lawn

### Take a Seat, Make a Friend

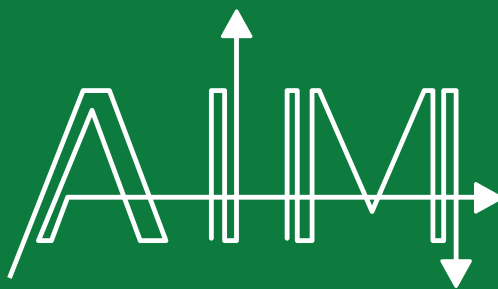
August 22  
1 PM - 3 PM  
South Lawn

### Pizza with the President

September 12  
2:00 PM  
Library Mall

### Scrappy's Taxi

August 19 / 20  
9 AM - 11 AM  
Kerr, Rawlins,  
West



Interested in becoming a leader on campus through orientation or mentoring? A.I.M. is designed to help jump start students in their leadership development. Pick from one of the three class times and commit to eight weeks of learning more about yourself as a leader!

### Class Options:

#### Mondays

2:00 - 3:00 PM

#### Tuesdays

1:30 - 2:30 PM

#### Wednesdays

3:00 - 4:00 PM



Use the QR code above to register or visit University Union, Suite 377!



# EAGLE CAMP

## Fall Events

### EAGLE CAMP REUNION

Thursday, September 12  
3:00 PM - 5:00 PM  
Union 382

### EAGLE CAMP TAILGATE

Saturday, September 28  
2 hours before kick-off  
Clark Park

**We would love your Feedback on  
your Eagle Camp experience!**



If you have any additional questions, you can always contact us at:

**Orientation and Transition Programs**

University Union, Suite 377

Phone: 940-565-4198 | Website: [transition.unt.edu](http://transition.unt.edu) | Email: [freshman@unt.edu](mailto:freshman@unt.edu)



**glenlake**  
Camp & Retreat Center

1102 NE BARNARD ST.  
GLEN ROSE, TEXAS 76403



**EXISTING CAMP MASTER PLAN**  
SCALE: 1" = 80'-0"  
55.2 ACRES

